



## MARITIME SYSTEM SOLUTIONS

PIM OBU

Performance Indication Onboard Unit

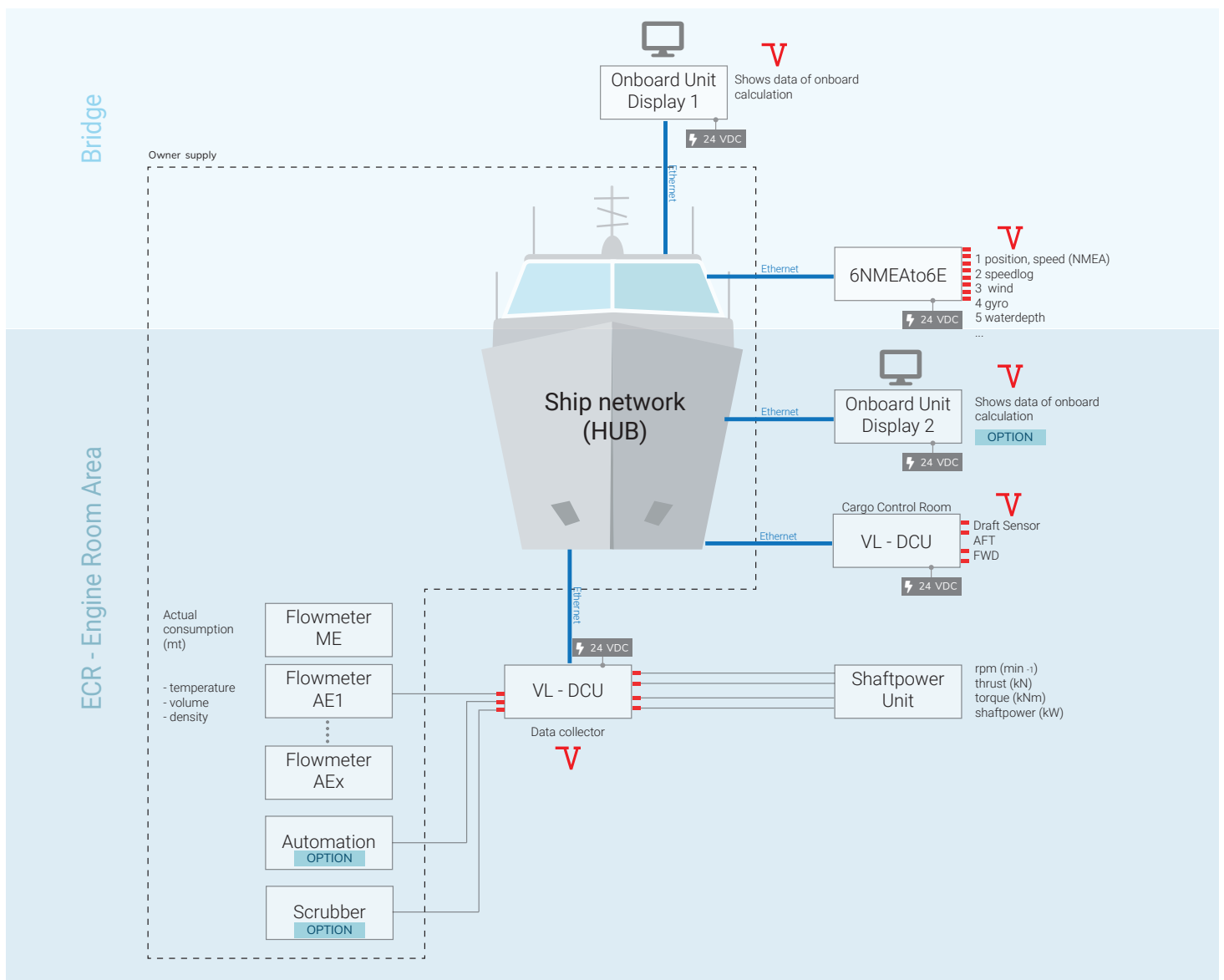
# SHIP PERFORMANCE

## Get detailed and current data with PIM OBU

While Noon reports are limited to every 24 hours and reports the history, VEINLAND's datalogger acquire the sensor data in real-time and reports the data automatically. The VEINLAND PIM-OBU system is modular designed and could be connected to multiple sensors on board the ship and it eliminates the human error.

All collected data can be also transferred to the owner's office for further investigation.

Figure: PIM OBU installation on board - Adaptation to every ship's equipment possible

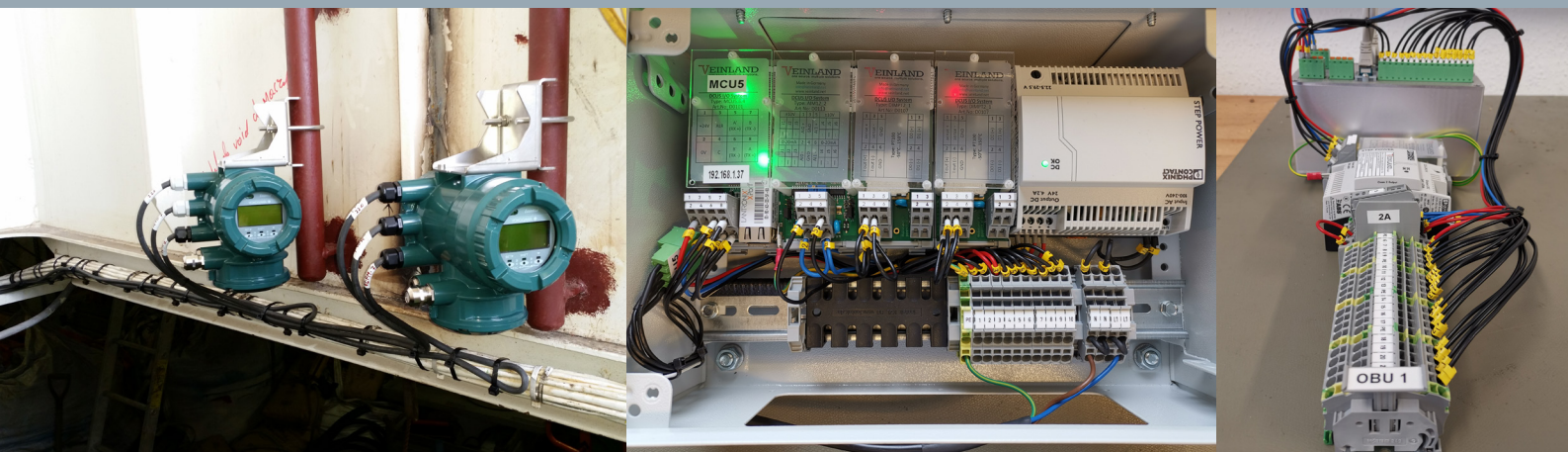
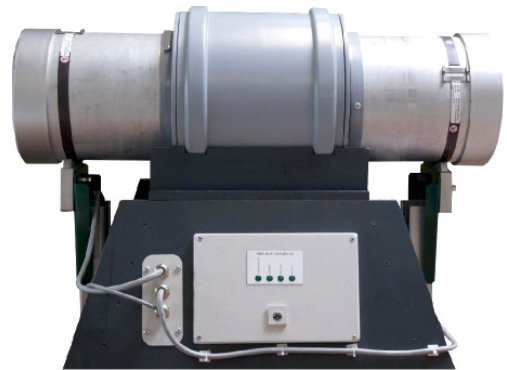




## Optional Equipment.

### Shaftpower Measurement Unit

The design of the Shaftpower Measurement Unit allows easy installation of the two magnetic sensor belts. Different shaft diameter for each sensor belts are also possible. A comprehensive preparation and installation manual with a lot of pictures allows to install the Shaftpower Measurement Unit via ship's crew. Easy calibration (zeroing) procedure by ship's crew possible!



### Flow Meter

We offer versatile flow meter for oil, heavy oil and many other oil-like liquids. There are Volume and Mass Flow Meter available for the efficient consumption measurement. A reliable solution for all applications involving oil is used.



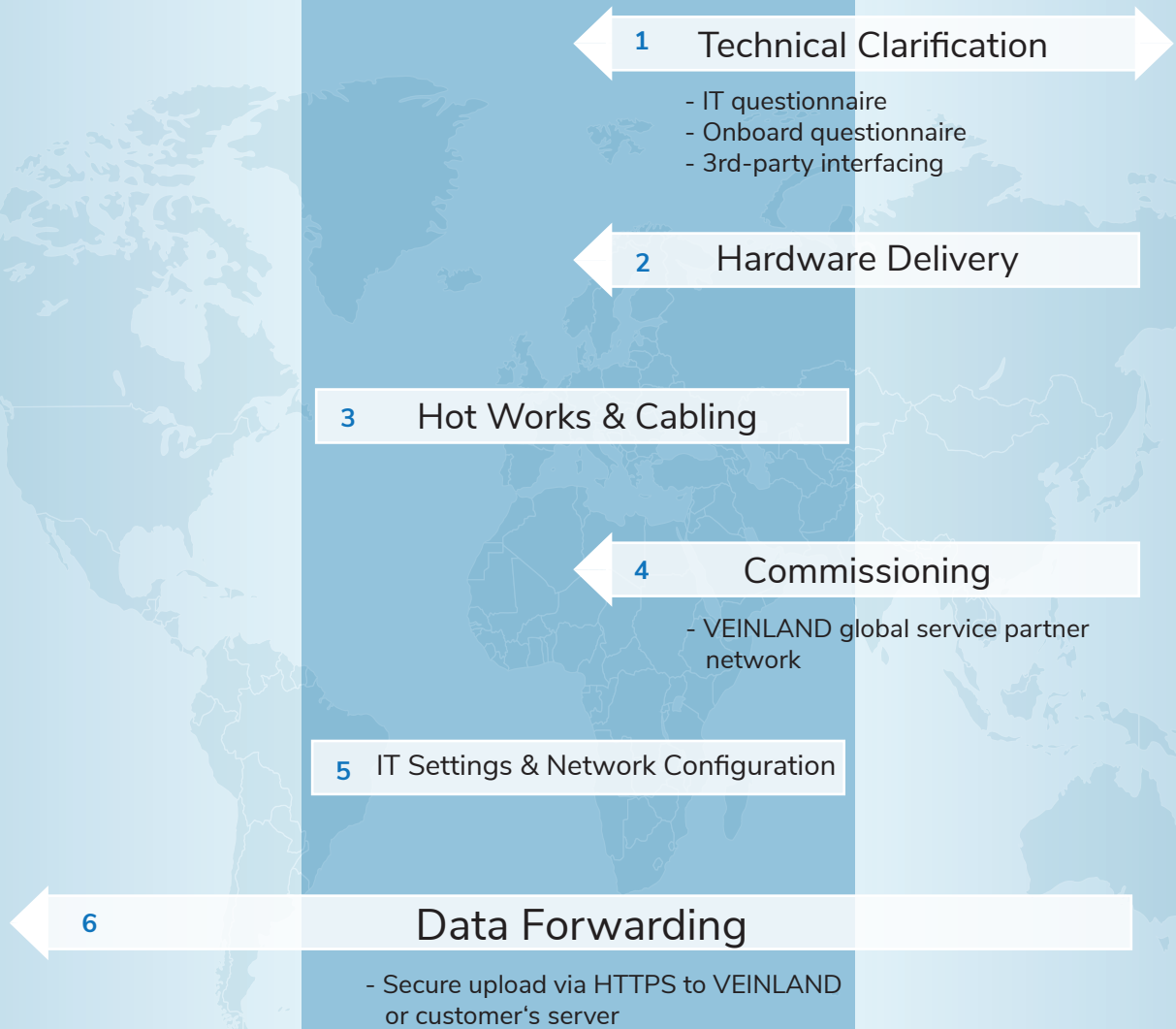


Vessel Data  
Analytics Company



Customer

**VEINLAND**  
one source. multiple solutions.



- 1** Completing questionnaires to provide details regarding sensors and hardware available onboard, as well as vessel background data where applicable.
- 2** Sharing upcoming dry docking plan or vessel schedule to arrange hardware delivery and commissioning plans.
- 3** Proceeding with hot works and cabling installation.
- 4** Installation and commissioning of the equipment carried out by well-trained VEINLAND service partner.
- 5** IT and network settings configured to fit vessel network infrastructure.
- 6** Ship-to-shore data transfer made available after commissioning.



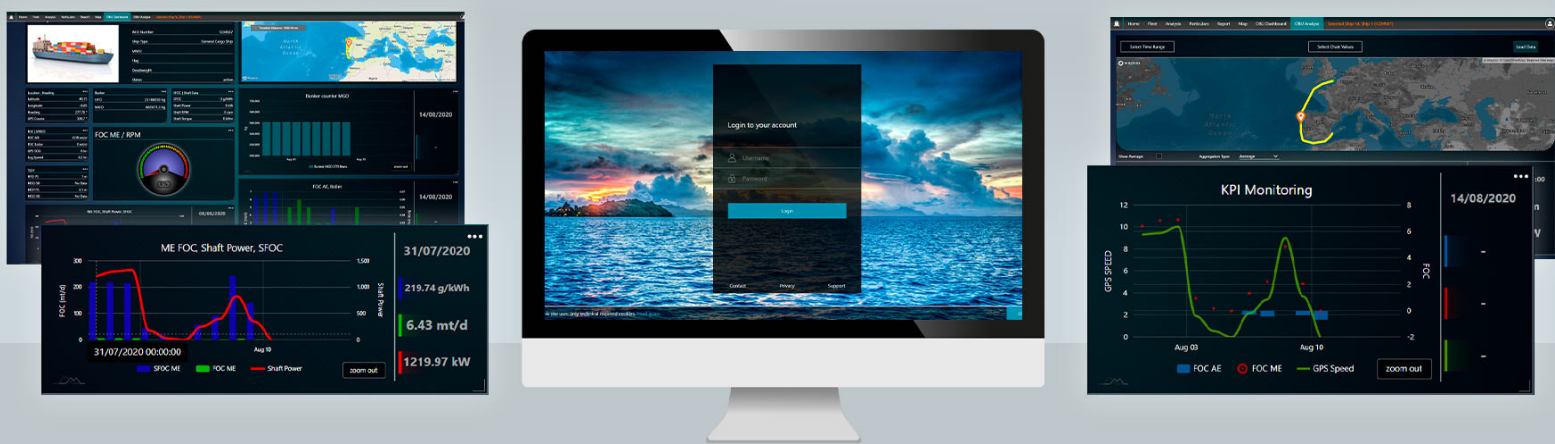
## Optional Equipment.

### LIVE VESSEL PERFORMANCE MONITORING with VEINLAND's PIM WebOffice

Ship owners, captains or crew members can obtain a general overview of the vessel information as well as a detailed report or analysis of its current performance by using the browser-based PIM WebOffice.

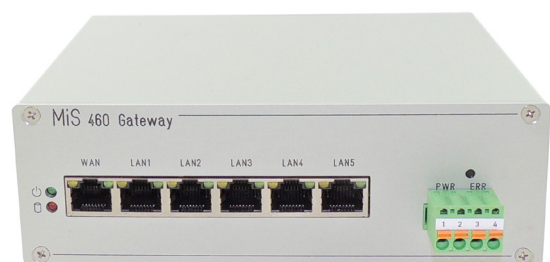
Only an internet browser and basic internet connection are required.

- Available for offshore or onboard crews
- Interactive and clearer view on map, diagrams and charts
- Browser-based, installation no longer necessary
- Most recent vessel position and accumulated vessel data
- Software updates done on server automatically, with latest features



### CYBER SECURED DATA TRANSFER with MiS 460 Gateway

The 460 Gateway establishes a secure connection between network and systems through variety of protocols and transmission methods. It can utilize all 7 layers in the OSI Model, establishing a logical connection and transmitting a data stream with or without filter function (or processing) between source and destination.



## Contact

VEINLAND GmbH  
Pappelallee 19  
14554 Seddiner See  
Germany

+49 33205 26 97-0  
info@veinland.net  
www.veinland.net

### **CEO**

Dipl.-Ing. Gerald Rynkowski  
info@veinland.net

### **Sales Director**

Christoph Niendorf  
sales@veinland.net



[www.veinland.net](http://www.veinland.net)